

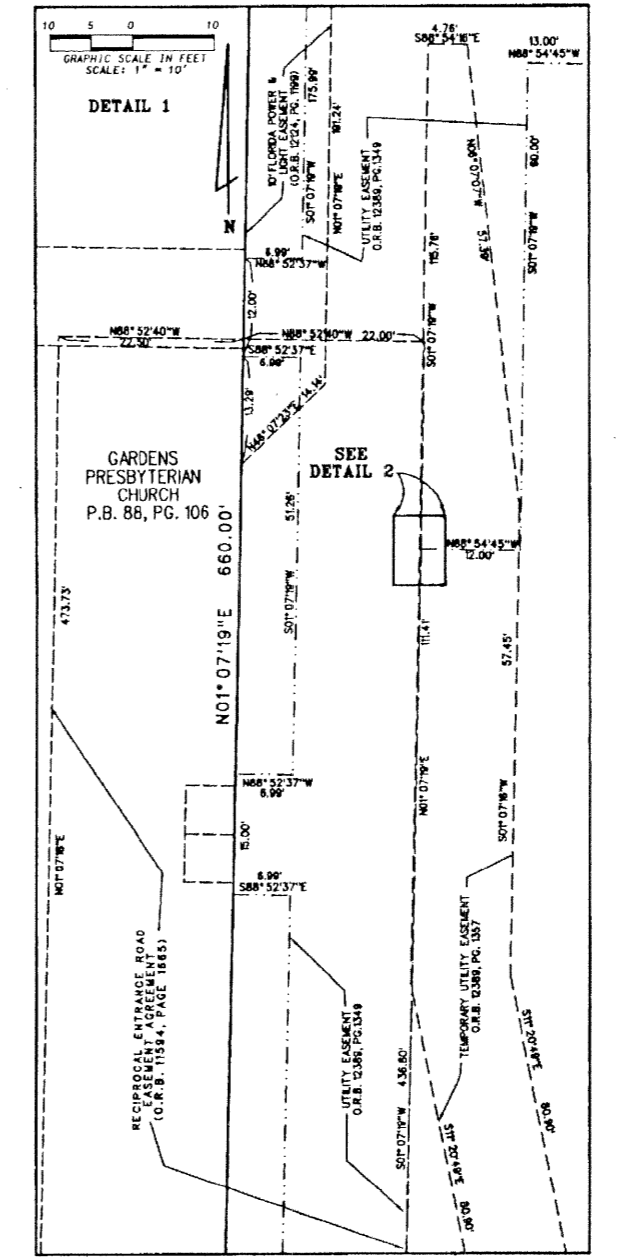
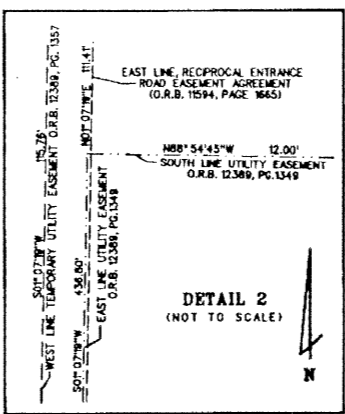
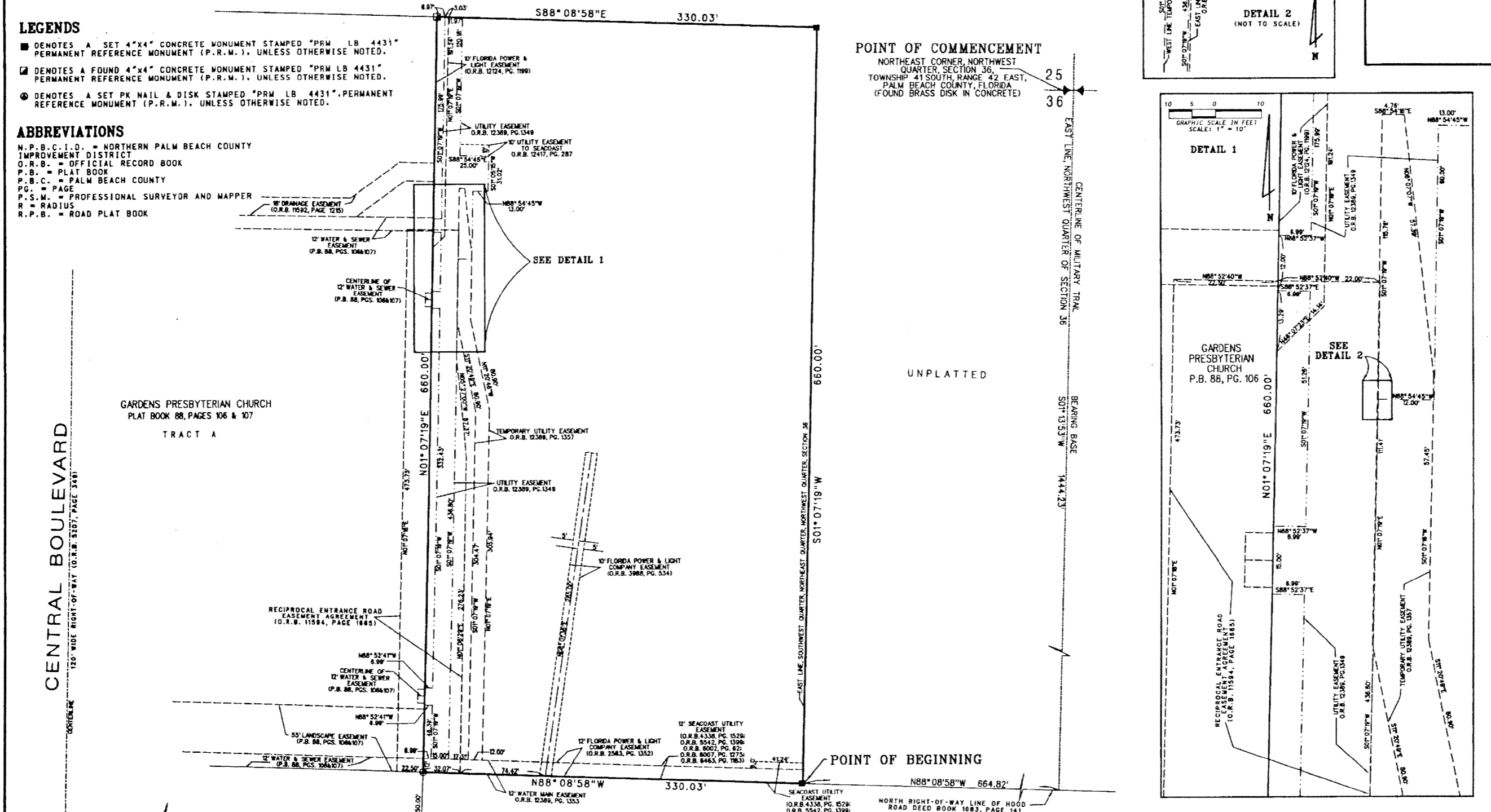
# TEMPLE BETH DAVID

LYING IN THE NORTHWEST QUARTER OF SECTION 36, TOWNSHIP 41 SOUTH, RANGE 42 EAST,  
CITY OF PALM BEACH GARDENS, PALM BEACH COUNTY, FLORIDA

UNPLATTED AUGUST, 2001 SHEET 2 OF 2

182

- LEGENDS**
- DENOTES A SET 4"x4" CONCRETE MONUMENT STAMPED "PRM LB 4431" PERMANENT REFERENCE MONUMENT (P.R.M.), UNLESS OTHERWISE NOTED.
  - DENOTES A FOUND 4"x4" CONCRETE MONUMENT STAMPED "PRM LB 4431" PERMANENT REFERENCE MONUMENT (P.R.M.), UNLESS OTHERWISE NOTED.
  - ⊙ DENOTES A SET PK NAIL & DISK STAMPED "PRM LB 4431", PERMANENT REFERENCE MONUMENT (P.R.M.), UNLESS OTHERWISE NOTED.
- ABBREVIATIONS**
- N.P.B.C.I.D. = NORTHERN PALM BEACH COUNTY IMPROVEMENT DISTRICT
  - O.R.B. = OFFICIAL RECORD BOOK
  - P.B. = PLAT BOOK
  - P.B.C. = PALM BEACH COUNTY
  - P.G. = PAGE
  - P.S.M. = PROFESSIONAL SURVEYOR AND MAPPER
  - R = RADIUS
  - R.P.B. = ROAD PLAT BOOK



**LIDBERG LAND SURVEYING, INC.**  
673 West Palm Beach Road, Suite 200  
West Palm Beach, Florida 33409 TEL: 561-742-9454

CAD: K:\USTATION\36-41-42\1960306\1960306.DGN			
REF.	FB.	PG.	JOB 00-1961306
FLD.			DATE 04/04/01
OFF. L.J.C.			DWG. 000-196P
CKD. D.C.L.	SHEET 2	OF 2	